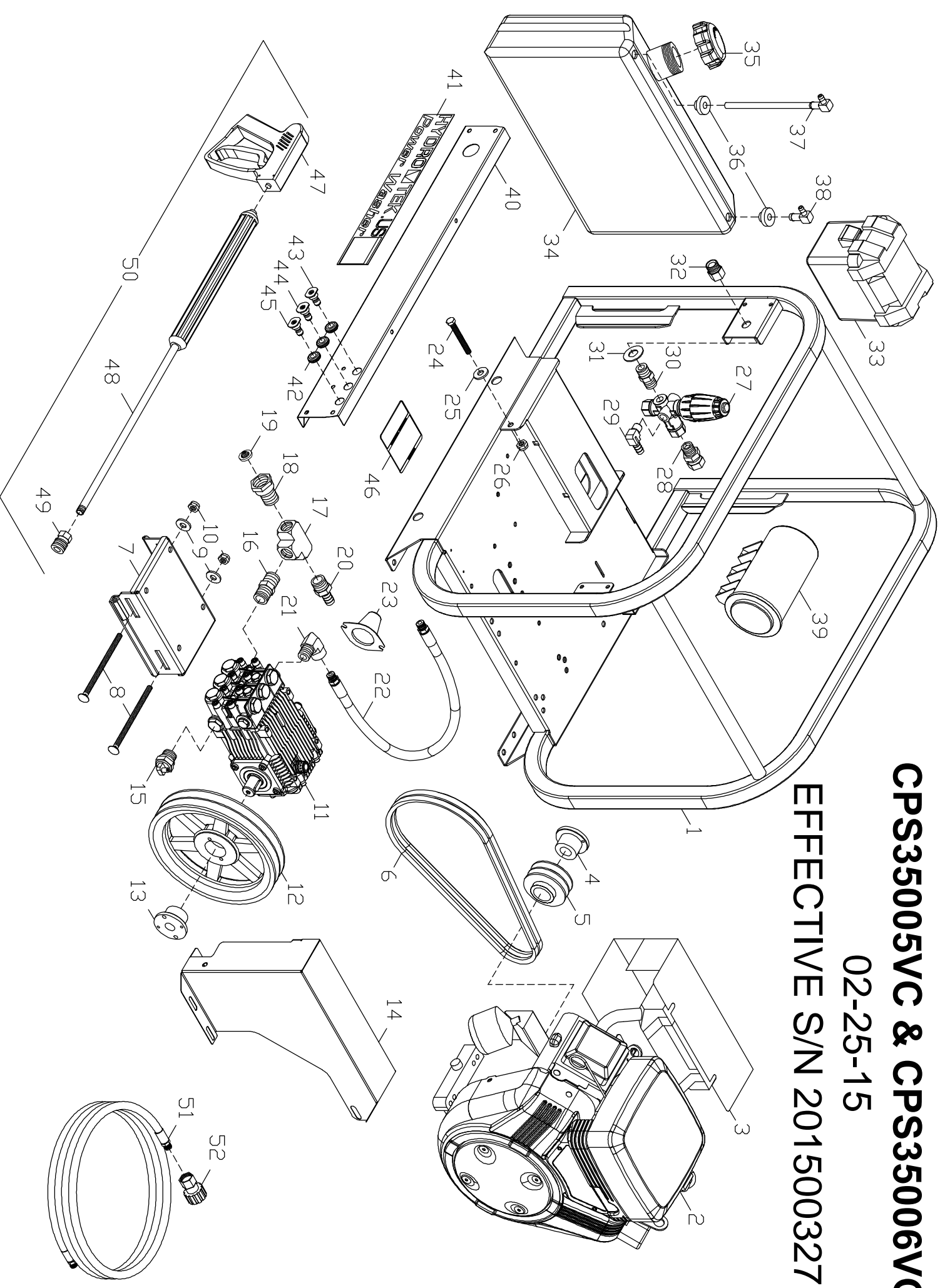


CPS SERIES

CPS35005VC & CPS35006VC

02-25-15

EFFECTIVE S/N 201500327



CPS35005VC & CPS35006VG PARTS LIST S/N 201500327

25-Feb-15

1	HCS00	CPS FRAME ASM 10/17/11
2	MS145	ENGINE 479CC VANGUARD E/S (CPS35005VC)
	MS180	ENGINE GAS 570CC VANGUARD E/S (CPS35006VG)
3	HS005	VAN MUFF / HEAT SHIELD LEFT #1
4	KSH16	BUSHING H1 (CPS35005VC)
5	KU045	SHEAVE 2BK45H (CPS35005VC)
	KV036	SHEAVE 3BK36 x 1" (CPS35006VG)
6	KSB32	BELT BX32
7	HCS12	CPS PUMP RAIL SLIDE TALL
8	FB886	CARRIAGE BOLT- 3/8-16 6.50 LONG
9	FWC06	WASHER CUT 3/8 PLATED
10	FNL06	NUT LOCK 3/8-16 PLATED
11	P4535	PUMP 5CP3120 4.5 @ 3500 20MM (CPS35005VC)
	PG563	PUMP 5.6/3500 NICKEL PLATED (CPS35006VG)
12	KU090	SHEAVE 2BK90H (CPS35005VC)
	KV090	SHEAVE 3BK90H (CPS35006VG)
13	KSH19	BUSHING H24MM
14	HCS40	BELT GUARD CPS (CPS35005VC)
	HS012	BELT GUARD 3 BELT DRIVE (CPS35006VG)
15	UPT46	THERM DUMP VALVE 145F.5M (CPS35005VC)
16	D2088	NIPPLE 1/2 BRASS
17	D6088	TEE 1/2 BRASS
18	D008M	GARDEN H A 1/2 NPT MALE
19	D0021	SCREEN WASHER GARDEN HOSE ADAPTER
20	D8088	HOSE BARB 1/2 BRASS
21	DC568	STREET ELL 3/8 STEEL
22	DH032	HOSE 3/8 x 30in 4000psi NO WHIP
23	PP692	SHAFT PROTECTOR 5 FRAME BD PMP (CPS35005VC)
24	FB648	BOLT 3/8 x 3" ALL THREAD
25	FWC05	WASHER CUT 5/16 PLATED
26	FNJ06	NUT LOCK JAM 3/8-16 PLATED
27	UU323	UNLOADER 4500 PSI 8GPM AR
28	DE566	SWIVEL 3/8 STEEL
29	D8060	HOSE BARB 90 DEG 1/2H x 3/8MPT
30	DB506	NIPPLE 3/8 STEEL
31	FWS09	WASHER 11/16 ID x 1 1/2 OD STAINLESS
32	DQ76P	M22 PLUG x 3/8 NPT-F

33	HB050	BATTERY BOX ATTWOOD U1
34	WT036	FUEL TANK 4 GAL GAS RED
35	WT08G	GAS CAP NONVENTED CARB APPROVED
36	DFE04	FUEL TANK BUSHING 1/4
37	DF599	FUEL TANK ADAPTER w/PLASTIC TUBE
38	DFE04	FUEL TANK ELL 1/4
39	MC100	CARBON CANISTER 1000CC
40	HCS13	CPS PANEL 10/18/11
41	GLL78	LABEL HYDRO TEK 20.75 x 2.625
42	HLB09	GROMET NOZLE HOLDER
43	NQ452	NOZZLE/QDC 045 x 15 (CPS35005VC)
	NQ552	NOZZLE/QDC 055 x 15 (CPS35006VG)
44	NQ453	NOZZLE/QDC 045 x 25 (CPS35005VC)
	NQ553	NOZZLE/QDC 055 x 25 (CPS35006VG)
45	NQ454	NOZZLE/QDC 045 x 40 (CPS35005VC)
	NQ554	NOZZLE/QDC 055 x 40 (CPS35006VG)
46	GLL30	MAINTENANCE LABEL 4 x 4 SC,SS,SM
47	VG200	TRIGGER GUN, INSULATED 4000psi
48	VW045	WAND 1/4" x 48" MOLDED GRIP
49	DQ04S	COUPLER 1/4 SOCK FEM
50	AVGH4	WAND 48" MOLDED GRIP, GUN, QC
51	DH057	HOSE 3/8 x 50 4000 PSI 250F
52	DQ76N	M22 COUPLER x 3/8 NPTF

SERVICE PARTS NOT SHOWN

	33062	VALVE KIT (1) REQUIRED (CPS35005VC)
	46839	PISTON OIL SEAL KIT (3) REQUIRED (CPS35005VC)
	33629	SEAL KIT (1) REQUIRED (CPS35005VC)
	46884	PISTON KIT (3) REQUIRED (CPS35005VC)
	K01	VALVE KIT (1) REQUIRED (CPS35006VG)
	K02	PISTON OIL SEAL KIT (3) REQUIRED (CPS35006VG)
	K69	SEAL KIT (1) REQUIRED (CPS35006VG)
	K28	SEAL KIT WITH BRASS (3) REQUIRED (CPS35006VG)
	47040409	PISTON KIT (3) REQUIRED (CPS35006VG)
	MS185	OIL FILTER
	MS183	AIR FILTER
	ABMAG	OPERATION PACKET PRO LINE